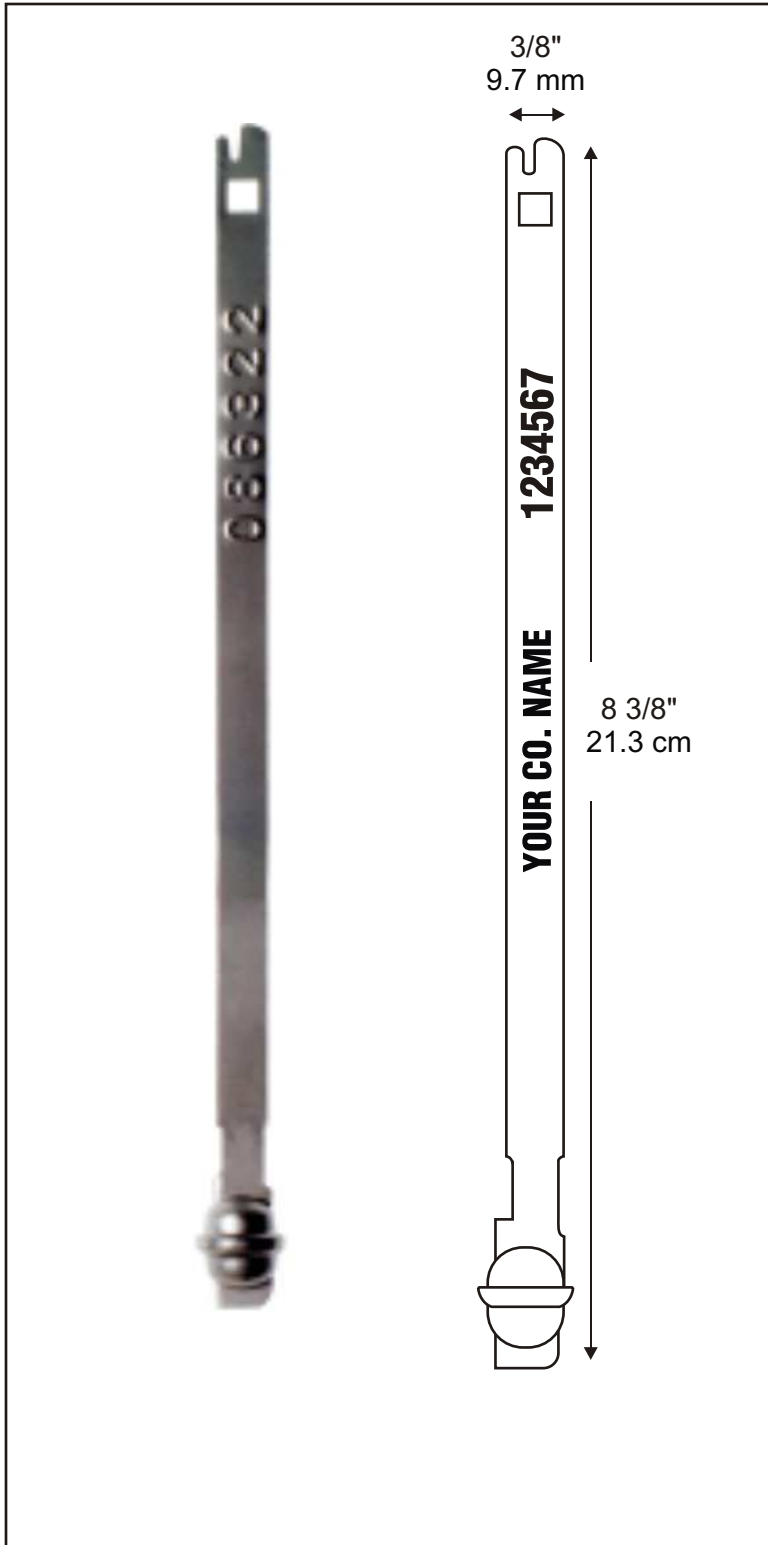


# Model: B1 Ball Seal

Available as...

- STANDARD ITEM FROM STOCK:  
Pre-Printed / Pre-Numbered
- CUSTOM ORDERED ITEM  
Printed & Numbered



## DESCRIPTION:

AC&M's B1 Ball Seals, serves many types of uses. Steel ball locking housing with 2 spring locks for truck boxes and cargo containers. About 87% of the reported total direct-cost cargo loss occurs during road transport. Ball Seals ensure security and durability.

## BREAKING STRENGTH:

140 Lbs. / 63.5 Kg.

## PRINTING:

Imprinting available for Ball Seals. One line up to 17 spaces plus consecutive numbers up to 7 digits. Logos available.

## PACKAGING:

- 100 Seals to a bundle.
- 1,000 Seals to a carton.

Cartons containing 1,000 seals measure: 18" x 18" x 17" and weigh 15 Lbs. 45.7cm x 45.7cm x 43.2cm and weigh 6.8 kg.

## USE:

Self locking with no tools. Cannot be opened unless the seal is destroyed.

Insert seal's 'tab' end into locking end until you hear and feel the 'click'.

Pull-test seal to feel that it is securely seated.

*Custom Printing is available —  
Contact AC&M for details.*

# AC&M

**American Casting**  
& Manufacturing Corporation

**Toll-Free (800)342-0333**

Tel: (516) 349-7010 • Fax (516) 349-8389  
email: [info@AmericanCasting.com](mailto:info@AmericanCasting.com)

51 Commercial St · Plainview, NY 11803 USA

[www.AmericanCasting.com](http://www.AmericanCasting.com)